

Basic Handgun & Defense Course

Peter M. Friedman

NRA Law Enforcement Instructor

CA DOJ Firearm Instructor

NRA Personal Protection Instructor

NRA Advanced Defensive Handgun Instructor

Glock Factory Certified Instructor

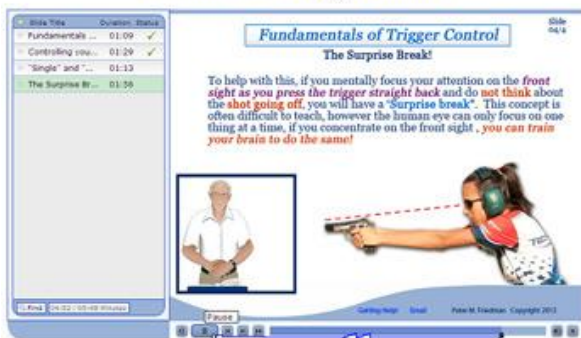
Glock Factory Certified Advanced Armorer

Visit our website:

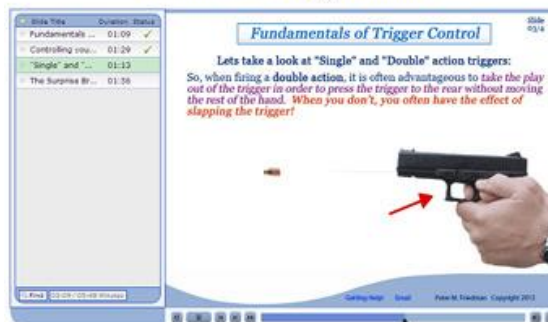
www.FriedmanHandgunTraining.com

AIMING, BREATH CONTROL, HOLD CONTROL, TRIGGER CONTROL

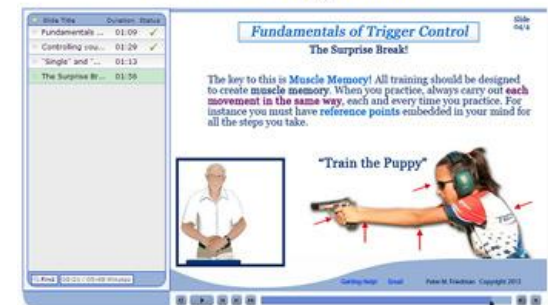
Fundamentals of Trigger Control



Fundamentals of Trigger Control



Fundamentals of Trigger Control



Firearms!

Tools of Last Resort

***"The best way to win
a confrontation is to
avoid a confrontation."***



Mental Preparation

Are you capable of using Deadly Force?

- *Develop a Plan!*
- *Practice the Plan Visualizing the Target!*
- *Continue Training!*

***If Not,
Get
Hornet
Spray!***



Setting Up Safe Rooms

- Master Bedroom, Kid's rooms, Guest rooms, etc.
- ***DO NOT EXIT SAFE ROOMS UNTIL POLICE ARRIVE!***
- **Install Flip-Locks** using 2" steel screws!
Remove and replace door hinge screws, one screw at a time, with 2" steel screws!



FIREARM LOCK BOX

- This is the *GunVault 300 Lock Box* to secure the firearm in the Safe Room.
- Never store firearms for home defense using keyed locks, only ***combination locks!***



FIREARM CARRY BAGS

- Firearm can be carried in a soft sided bag, *as long as it can be locked.*



Old Cell Phones

- Take **old cell phones** and put them on chargers in different rooms. **Any cell phone can call 911!**
- **Kids** should have a cell phone **to call 911 in an emergency too.**



Setting Up Safe Rooms

- **Nightlights** with red or blue bulbs or **Flash light** with red lens if you feel you need one.



- Roll Pins

(**glass doors** and **windows** locked with Roll-pins)



Home Alarms

- Home Alarms should contact the company wirelessly.
- They should use a cell phone contact system, and not a hardwired phone system that can be cut.



Wireless Contact System



Hardwired Phone System

Simple Alarm Systems

- You can use the **panic button** on your car **key fob**!



Simple Alarm Systems

- You can use a simple **AIR HORN!**
- For **Burglar Alert** or **Fire Warning!**

- **Whistle/Air Horn:**

- **Description:** Extremely loud horn with flashing lights. Nylon cord attached.



amols'.com
Favoring Fun, Since 1949



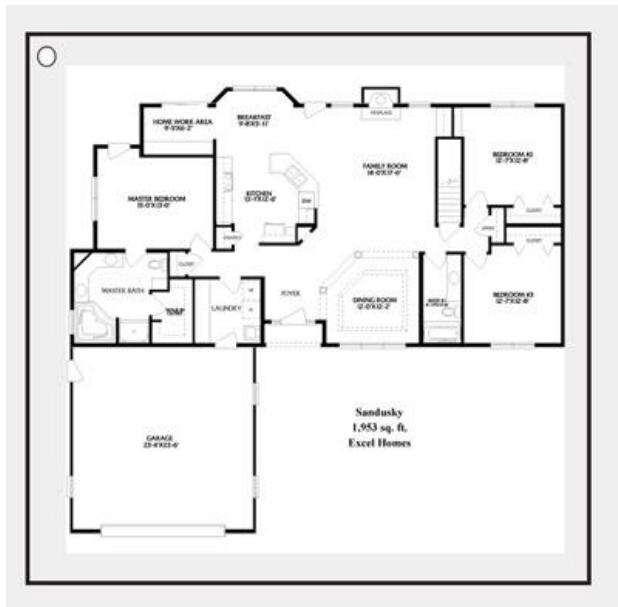
KAYAK CRAZY.com
SOMETHING TO YAK ABOUT!



Helping Police



- Have a floor plan of the house **laminated**.
- Pictures of **people living in the house** on the other side. *Faces must be clear and easily identified.*
- **Key to front door** and **glow stick** all clipped together to *pass to police out of a window.*



Making The Exterior Safe

- Residence

- Grounds and Landscaping

(Cut back shrubbery)



- Exterior **(motion floodlights, etc.)**

Bad GUYS can hide behind bushes!!

- **Back into the garage** providing full view so that no one can sneak in.
- Have your **bright lights on** when coming home after dark.

Use of Deadly Force

- Standard of **"The Reasonable Person"**.
- Ability of attacker!
- Presence of **Imminent** threat!
- What kind of weapon do they have?





The Encounter

It's 3:00am you hear glass breaking, voices in the house or movement downstairs.

What do you do?

Control The Encounter

Responding to a possible break-in:

- **Go to Safe Room if not there already!**
 - Retrieve **(loaded)** firearm and **cell phone**, *be ready to call 911.*
 - If time, activate **air horn** to warn others in the home, or car alarm, panic button etc.
 - Retrieve your flashlight (**red** or **blue** lens!) if wanted.
- **Call police 911 (*calls are taped!*)**
- **Give a Verbal warning to Intruder?**
- **Assist Police with (*key on glowstick, floor plan!*)**

Defensive Shooting

- Kneeling Position
- Point Shooting
- Verbal Challenge
- Tueller Drill



**"I'M ON THE
PHONE
WITH 911"**

**"I HAVE A
GUN AND I
WILL USE
IT!"**

"GET OUT!"



**Penetrating
Power**

Bullet Types

**Stopping
Power**



**Good
Home Defense
Ammo**

Semi-Wadcutter

**Dutch Load
Magazines**



Wadcutter

Full Metal Jacket

Bad



Frangible



Jacketed Soft-Point



**Understand the
difference**



Possible legal aftermaths of using Deadly Force

- Criminal Investigation
- Fifth Amendment Protection
- Civil Actions if Done Wrong
- Remember **"I WAS IN FEAR FOR MY LIFE"**



When Not done Right!



When done Correctly



BASIC RULES FOR SAFE GUN HANDLING

- **ALWAYS** KEEP THE GUN POINTED IN A
SAFE DIRECTION
- **ALWAYS** KEEP YOUR FINGER OFF THE
TRIGGER UNTIL READY TO SHOOT
- **ALWAYS** KEEP THE GUN UNLOADED
UNTIL READY TO USE

CARTRIDGE DESIGNATION AND IDENTIFICATION



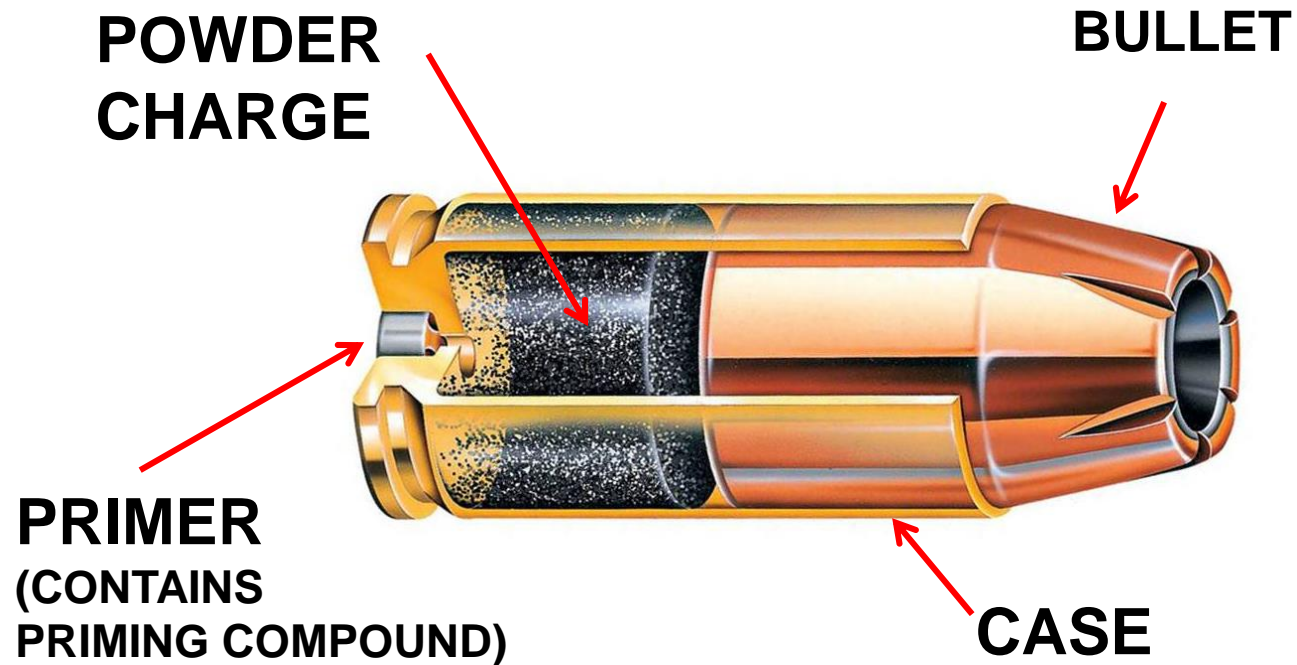
Proper Cartridge identification *is necessary to ensure the correct ammunition is loaded into the handgun.*



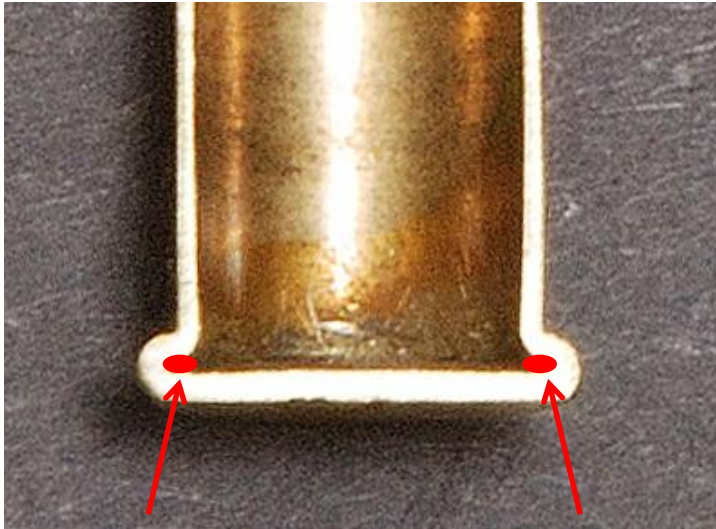
THE CARTRIDGE DESIGNATION IS:

- MARKED ON THE PISTOL
- STAMPED ON THE HEAD OF THE CARTRIDGE CASE (HEADSTAMP)
- PRINTED ON THE FACTORY AMMUNITION BOX

CARTRIDGE COMPONENTS

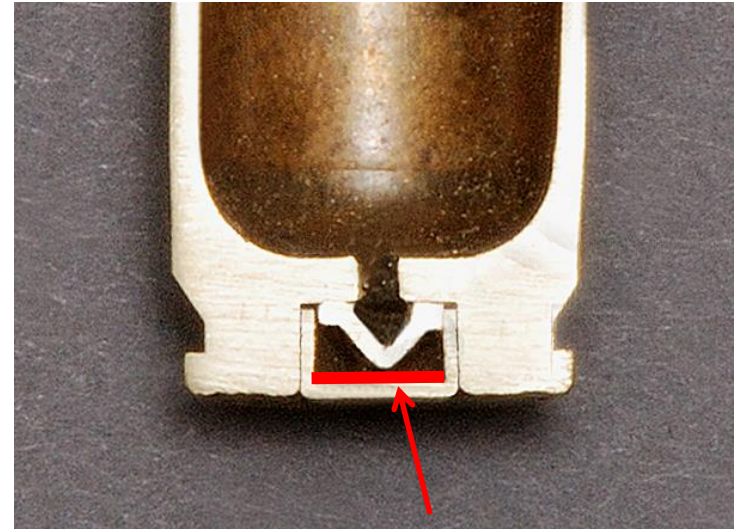


RIMFIRE AND CENTER-FIRE CARTRIDGES



RIMFIRE CARTRIDGE

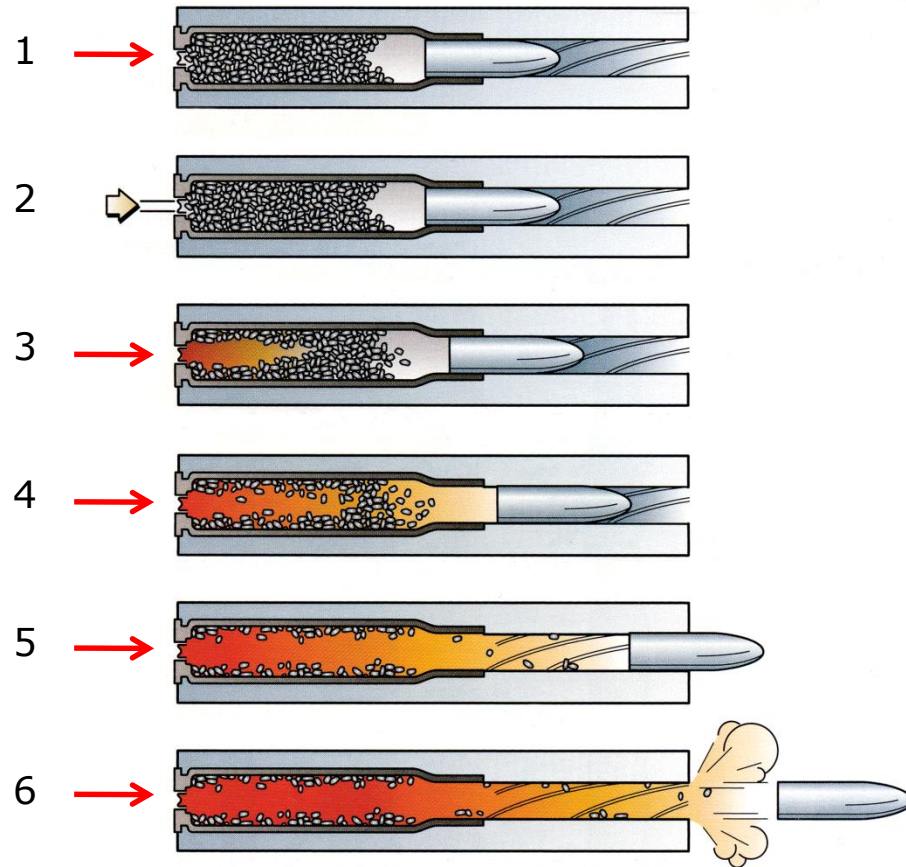
Primer compound is contained in the inside of the rim of the case head.



CENTERFIRE CARTRIDGE

Primer compound is contained in a metal cup pressed into the center of the case head.

CARTRIDGE FIRING SEQUENCE



CARTRIDGE FIRING SEQUENCE

- 1.) **CARTRIDGE IN CHAMBER**
- 2.) **FIRING PIN STRIKES PRIMER OR CASE RIM**
- 3.) **FLAME GENERATED BY PRIMER COMPOUND IGNITES POWDER CHARGE**
- 4.) **POWDER BURNS RAPIDLY, GENERATING A VOLUME OF HOT, HIGH-PRESSURE GAS (4000-30000 PSI!)**
- 5.) **GAS PUSHES BULLET THROUGH BORE AT HIGH SPEED (800-1000 FPS!)**
- 6.) **BULLET EXITS MUZZLE, HOT GAS MAKES "BANG"**

COMMON HANDGUN ACTION TYPES

- **DOUBLE-ACTION REVOLVER**



- **SEMI-AUTOMATIC PISTOL**

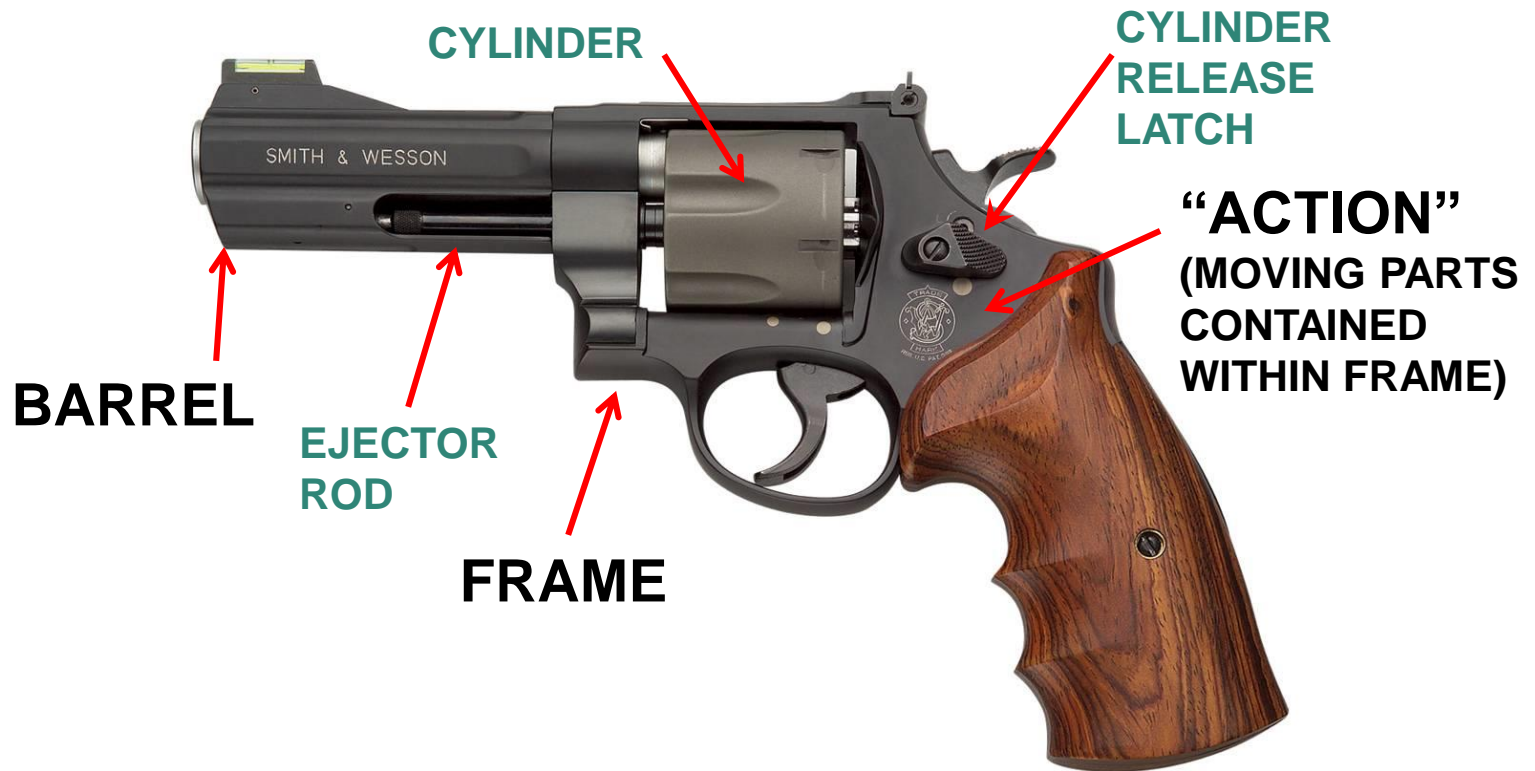


DOUBLE-ACTION REVOLVER

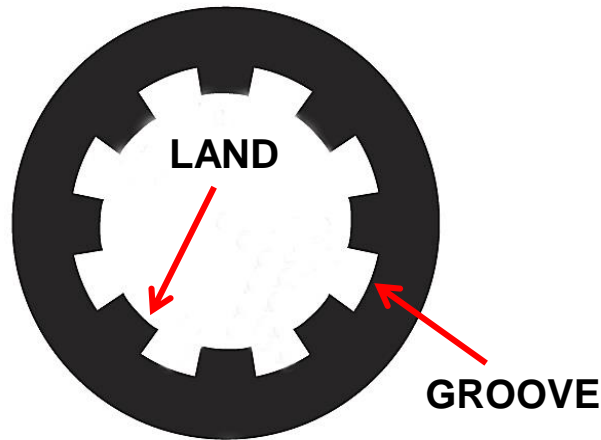


- The Trigger performs two tasks: Both cocking and releasing the hammer.
- Most Double-Action revolvers can be fired in the Single-Action mode.

MAIN PARTS OF A REVOLVER

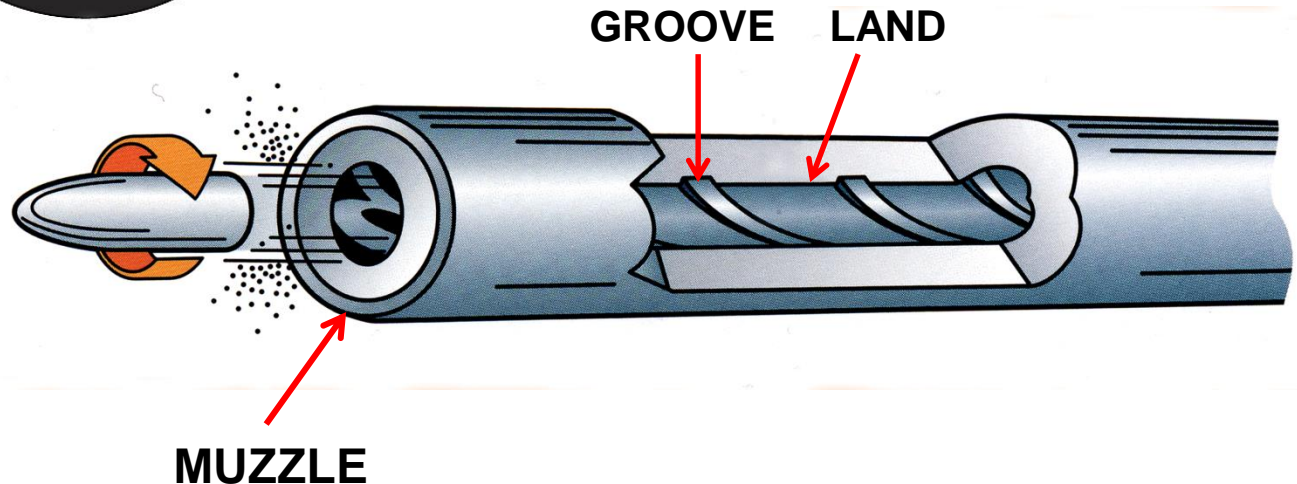


BARREL CONSTRUCTION



“RIFLING”

SPIRALING *LANDS* AND *GROOVES* THAT ENGRAVE THE BULLET AND GIVE IT SPIN AS IT TRAVELS THROUGH THE BORE





SEMI-AUTOMATIC PISTOL ACTIONS



- **SINGLE-ACTION (1911)**

*Each pull of the trigger performs a Single-Action: **Releases the hammer**. The hammer must be manually cocked for the first round.*

- **DOUBLE/SINGLE-ACTION (Sig, Beretta, HK)**

*The initial long, heavy trigger pull **both cocks and releases the hammer**. Each subsequent shot is then fired in Single-Action mode.*

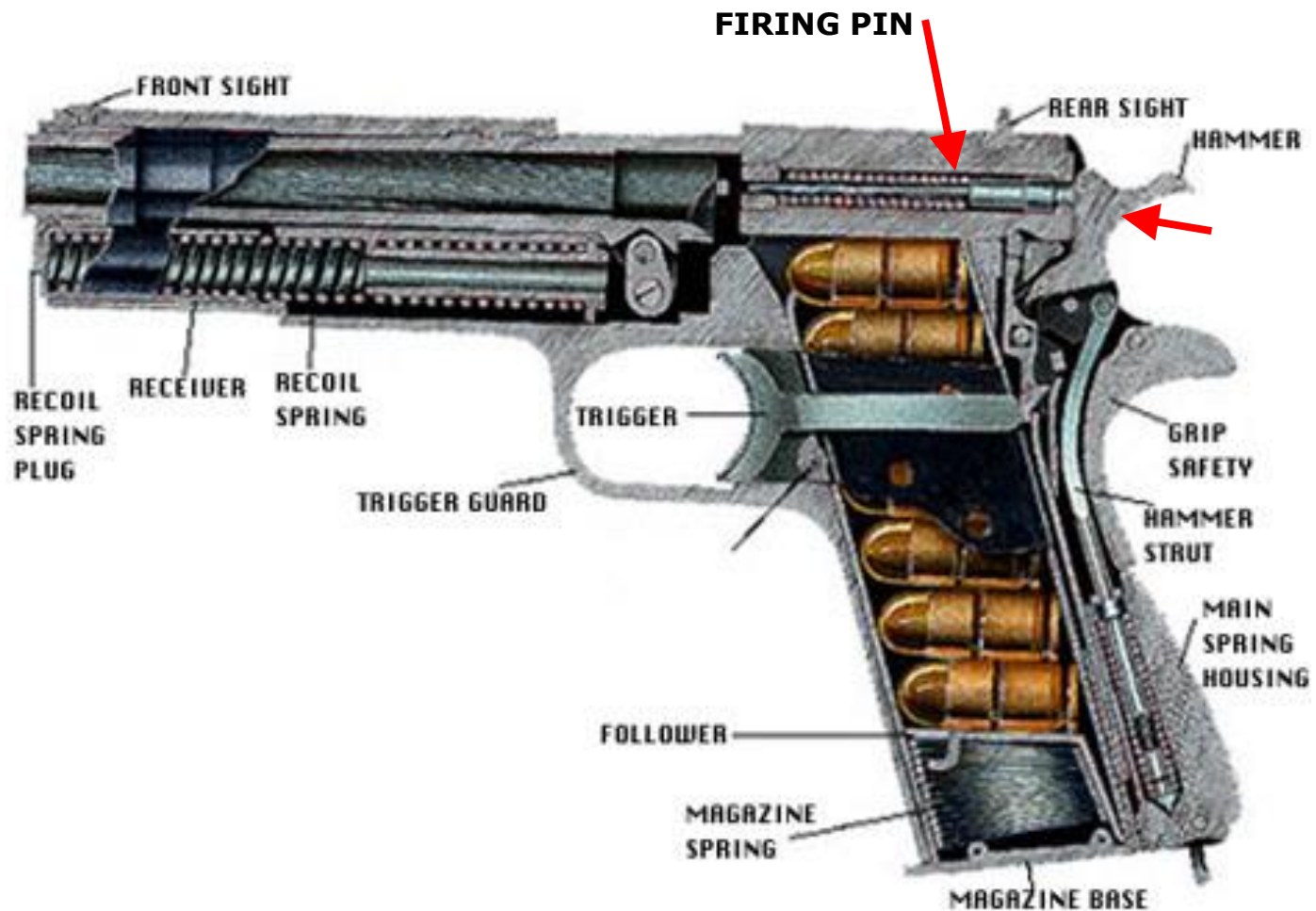
- **DOUBLE-ACTION-ONLY (Glock)**

*Each pull of the trigger **both cocks and releases the firing pin or hammer**, as with a double action.*

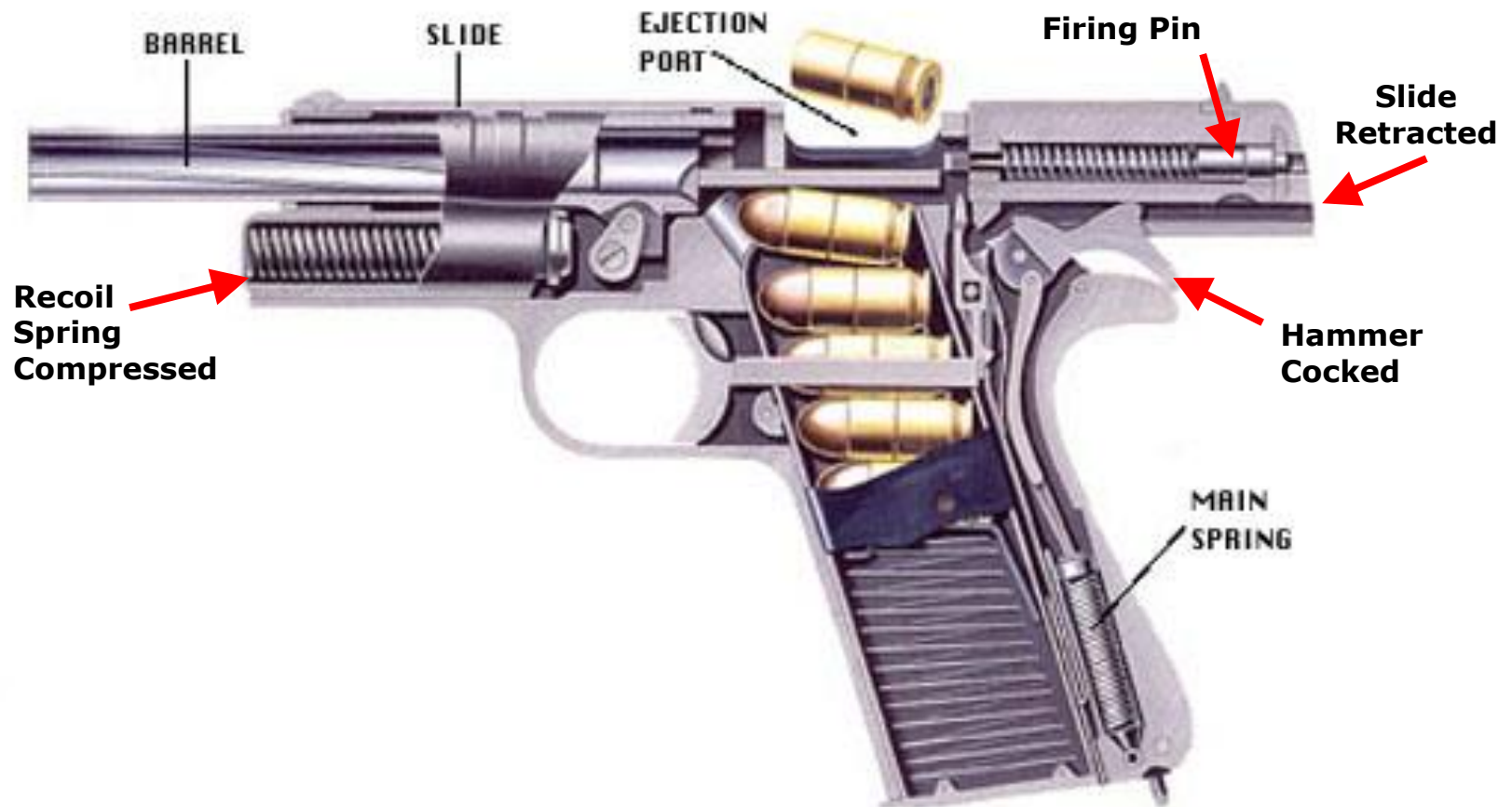
MAIN PARTS OF A 1911 SEMI-AUTOMATIC PISTOL



1911 SEMI-AUTO .45 CUTAWAY

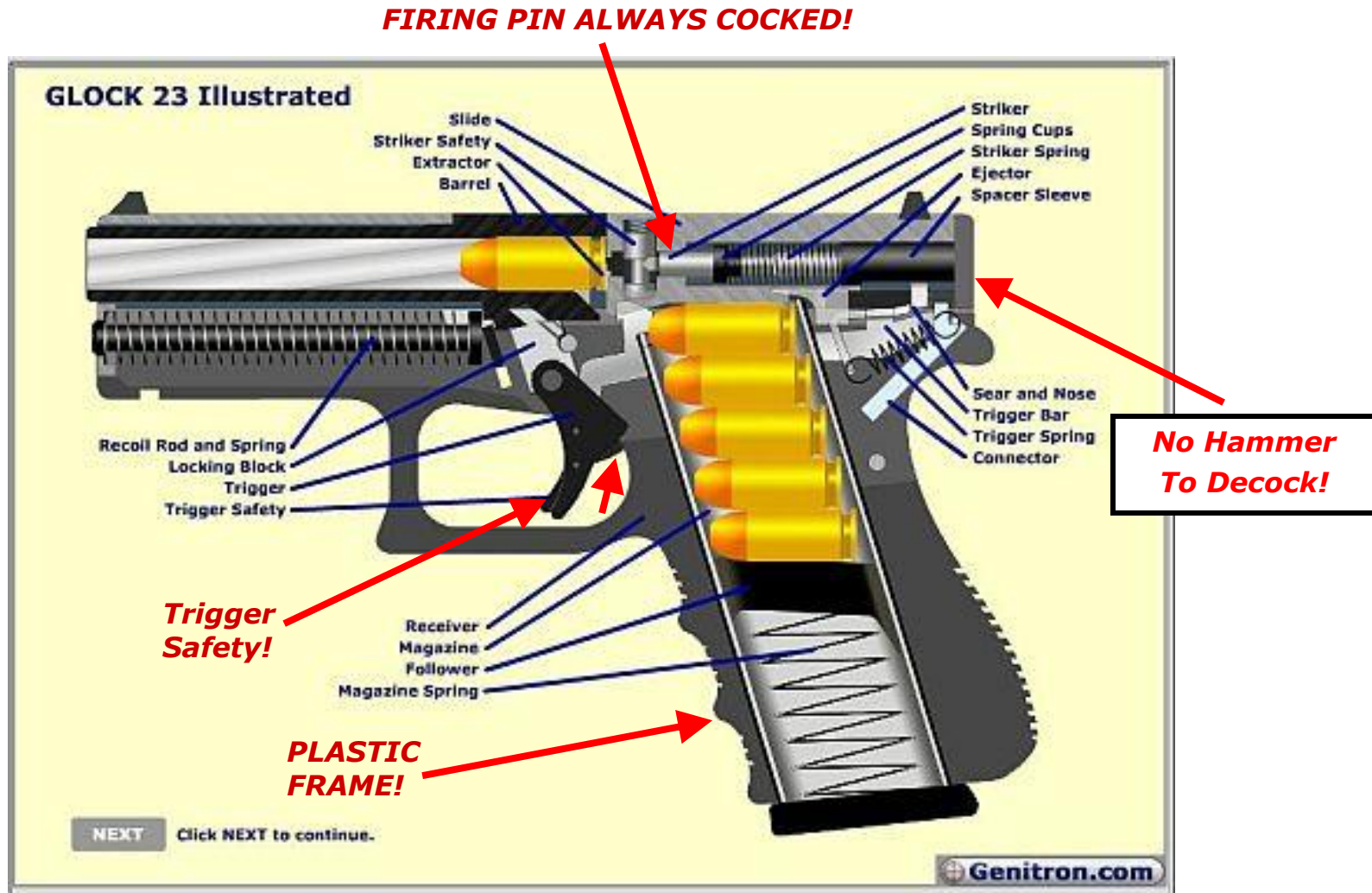


HOW A 1911 SEMI-AUTO OPERATES



GLOCKS & CLONES!

(Smith M&P, Springfield XD)



FUNDAMENTALS OF PISTOL SHOOTING

○ **AIMING.....**



○ **HOLD CONTROL.....**



○ **BREATH CONTROL....**



○ **TRIGGER CONTROL.....**



○ **FOLLOW-THROUGH...**



○ ***THESE FIVE FUNDAMENTALS SHOULD BE PERFORMED WITH EVERY SHOT.***

DOMINANT EYE EXERCISE



- **EXTEND ARMS FORWARD AND FORM OPENING BETWEEN THE HANDS**
- **LOOK AT DISTANT OBJECT THROUGH OPENING**
- **BRING HANDS TO FACE WHILE LOOKING AT OBJECT—OPENING WILL BE ALIGNED WITH THE DOMINANT EYE**

THUMB POSITION FOR THE TWO-HANDED GRIP



REVOLVER GRIP:
NON-SHOOTING-HAND
THUMB LIES ON TOP OF
SHOOTING HAND THUMB



SEMI-AUTOMATIC:
***THUMBS WILL BE HIT BY
THE SLIDE WITH INJURY
OR JAM THE GUN!***

SAFE TRIGGER FINGER POSITION

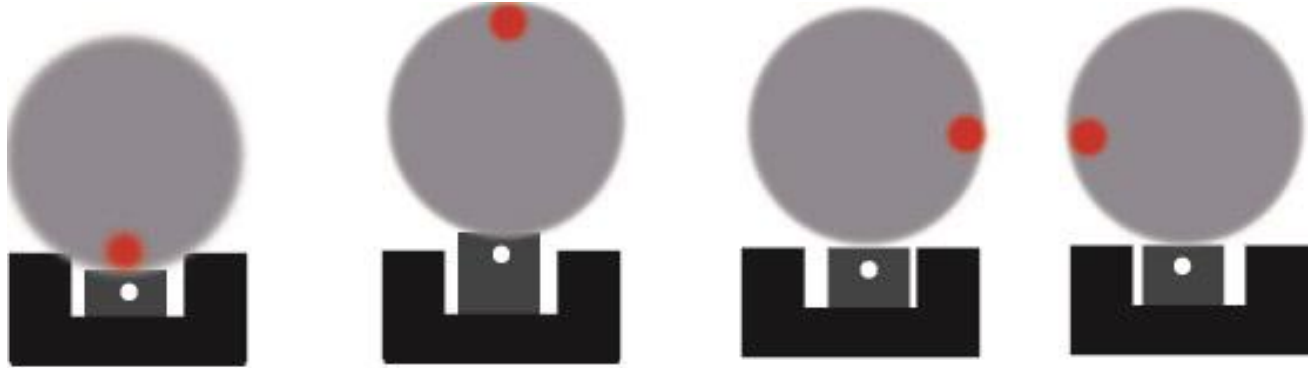


The trigger finger is placed on the frame of the pistol pointing at the target.

(Not on the slide if a Semi-Auto! The gun will jam!)

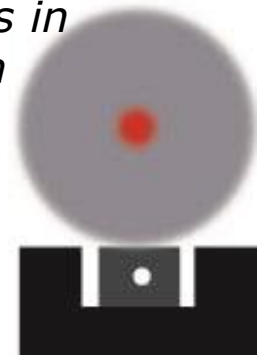
Keep your finger above and away from the trigger!

SIGHT ALIGNMENT ERRORS



Displacement of bullet hits when there are errors in the alignment of the front sight in the rear notch

**Correct Sight
Alignment Picture**



PROPER FRONT SIGHT FOCUS



Basic Sight Picture – “Post & Notch”

3-DOT COMBAT SIGHT SYSTEM



Most Semi-Auto Sight Alignment

PROPER FRONT SIGHT FOCUS



INCORRECT
Shooters Focus
on Target



INCORRECT
Shooters Focus
on Rear Sights



CORRECT
Shooters Focus
on Front Sights